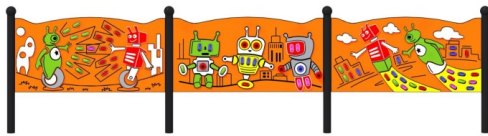


WORLD OF ROBOTS 1 LUMO

Code: 01-TA-829-LP



Physical



Social-emotional



Cognitive



Creative



accessibility



Integration



Interaction



Socialisation



Thinking



Manipulation



Lighting

Description

The set of three connected, glowing sensory panels is an innovative space for interactive play, designed with children in mind, including those using wheelchairs. Thanks to various textures, vibrant colors, and engaging elements, the panels stimulate the senses, enhance cognitive abilities, and spark children's imagination. The main theme of the set features colorful robots. The built-in wheels, which emit colorful light when set in motion, make the play even more exciting. In the background, there are carved details resembling buildings, clouds, and plant motifs. The structure is made of black steel, galvanized, and powder-coated, while the panel is crafted from HDPE material. The pipes are finished with spherical decorative elements.

*Available pole colors [RAL]: 7016; 9006.

Playground device consists of

- 4 x poles
- 3 x panels in the set with a robot theme
- 62 x rotating wheels emitting colorful light

Product details

- Dimensions (LxWxH): 4,8 x 0,1 x 1,25 m
- Safety area (LxW): 7,8 x 3,1 m
- Age group: 2+
- Number of users: 12 people
- A certificate confirming compatibility with norm EN 1176
- Dimensional differences of no more than +/- 5% are allowed.

Materials

- The structure is made of black steel, galvanized, and powder-coated.
- Main structural profile dimension: $\text{Ø}76.1 \times 2$ mm.
- The board is made of 15 mm HDPE material.
- Available posts colors [RAL]: 7016; 9006.
- Board color: orange.
- Wheel colors: 22 x red, 15 x blue, 165 x green, and 9 x multicolor (red, blue, green).

All images are for illustration purpose only and may vary from the actual product.

