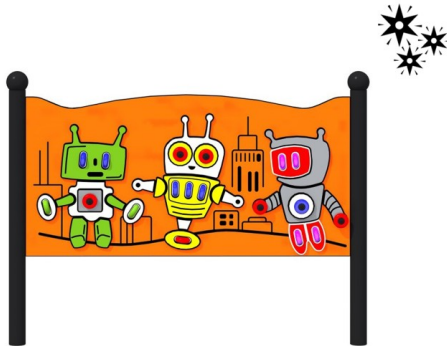


ROBOTS 2 LUMO

Code: 01-TA-822-LP



Physical



Social-emotional



Cognitive



Creative



accessibility



Integration



Interaction



Socialisation



Thinking



Manipulation



Lighting

Description

A large glowing sensory board designed for creative play, adapted for use by children in wheelchairs. The main theme features three colorful robots (from left to right: green, yellow, and gray). The rotating wheels emit colorful lights when set in motion, enhancing the play experience and making it more attractive. At the bottom of the board, there are grooves that imitate buildings, adding to the interactive environment. The construction is made from black, galvanized, and powder-coated steel for durability. The board itself is made of HDPE material, and the tubes are finished with decorative spherical elements.

* Available posts colors [RAL]: 7016; 9006.

Playground device consists of

- 2 x posts
- 1 x board featuring the theme of three robots
- 18 x rotating wheels emitting colorful lights

Product details

- Dimensions (LxWxH): 0,9 x 0,1 x 1,25 m
- Safety area (LxW): 4,65 x 3,1 m
- Age group: 2+
- Number of users: 4 people
- A certificate confirming compatibility with norm EN 1176
- Dimensional differences of no more than +/- 5% are allowed.

Materials

- The structure is made of black steel, galvanized, and powder-coated.
- Main structural profile dimension: Ø76.1x2 mm.
- The board is made of 15 mm HDPE material.
- Available posts colors [RAL]: 7016; 9006.
- Board color: orange.
- Wheel colors: 6 red, 6 blue, 2 green, 4 multicolor (red, blue, green).

All images are for illustration purpose only and may vary from the actual product.

